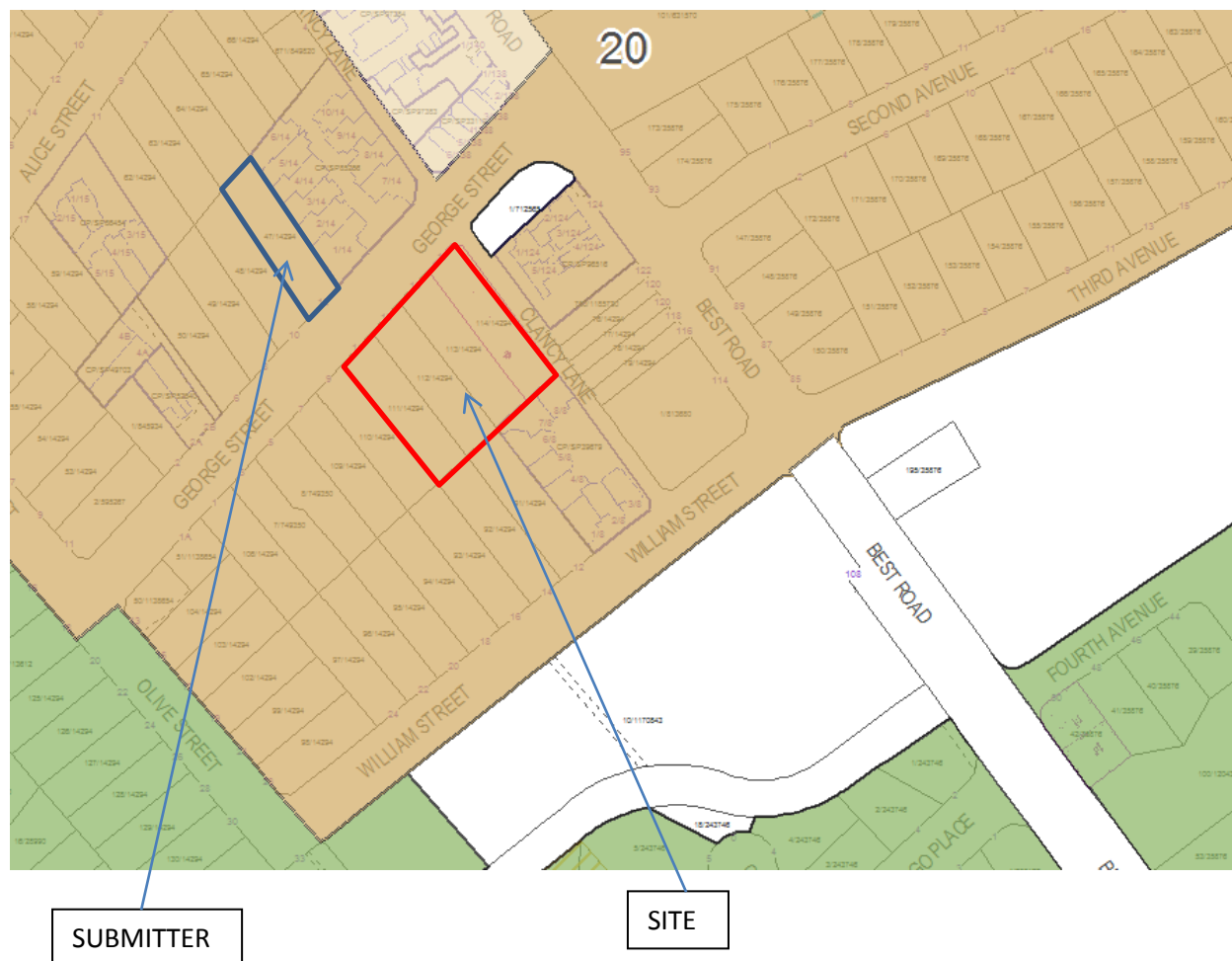


Issues raised by the public

1 Location of submitter



2 Consideration of issues raised

Issue	Planning comment/response
<p>Difficulty in entering and exiting property at 12 George Street, due to number of cars parked in street which blocks view of cars coming from Olive Street.</p> <p>Submitter suggests the entry/exit be relocated to Clancy Lane access point.</p>	<p>The issue raised by the resident relates to potential traffic impact on the street network as a result of the proposed development. This submission was forwarded to Council's Traffic Section for information and comment, and no objections were subsequently raised by this Section on traffic grounds subject to suitable conditions of consent.</p> <p>There appears to be no conflict with the neighbouring properties.</p> <p>The design of both driveways has been reviewed and is in accordance with the relevant Australian Standards. The development is not likely to have any adverse impact on general traffic in the area.</p> <p>Our Traffic Section considered the alternative access via Clancy Lane suggested by the submitter, but did not support this due to the narrow carriageway (3 m) of Clancy Lane.</p>

Appropriate conditions have been added to the consent to ensure compliance with relevant Australian Standards relating to driveway design, sightlines and egress requirements. The driveway design meets the relevant sightline requirements for vehicles entering and exiting the site, which will minimise any conflict.

The additional comments made by the submitter in relation to the arrangement of the surrounding street network is not directly relevant to the proposal - it has been forwarded to our Traffic Section for their information.
